

A375-Fluc-Puro

Product Description

Product Name: A375-Fluc-Puro
Catalog Number: CL055
Lot Number: CL-IM39

Species: Human (*Homo sapiens*)
Tissue: Skin
Cell type: Malignant melanoma
Parental cells: A375 (ATCC® CRL-1619™)
Morphology: Epithelial
Growth mode: Adherent
Reporter gene: Firefly luciferase (Fluc)
Selection gene: Puromycin (Puro)

This is a polyclonal population derived from the malignant melanoma A375 cell line (ATCC® CRL-1619™). Parental A375 cells were transduced with LV-Fluc-P2A-Puro (Imanis #LV012) encoding the firefly luciferase (Fluc) cDNA under the spleen focus-forming virus (SFFV) promoter linked to the puromycin resistance gene (Puro) via a P2A cleavage peptide. High Fluc expressing cells were selected using puromycin. The lentiviral vectors are self-inactivating (SIN) vectors in which the viral enhancer and promoter have been deleted. Transcription inactivation of the LTR in the SIN provirus increases biosafety by preventing mobilization by replication competent viruses and enables regulated expression of the genes from the internal promoters without cis-acting effects of the LTR¹.

Mycoplasma Testing

The A375-Fluc-Puro cell line has been tested for mycoplasma contamination and is certified mycoplasma free.

Cell Line Authentication

In light of studies suggesting that 18-36% of cell lines utilized in biomedical research are contaminated or completely misidentified,^{2,3} several funding organizations, including NIH, as well as major publishers, including those affiliated with the American Association for Cancer Research (AACR), require cell lines used in research to be authenticated prior to publication^{4,5}. The parental A375 cell line used to generate A375-Fluc-Puro was authenticated and certified free of interspecies cross contamination by STR profiling with 9 STR loci.

Recommended Uses

A375-Fluc-Puro cells are suitable for *in vitro* and *in vivo* experimentation.

A375 cells form tumors post implantation into immunosuppressed mice⁶. The Fluc transgene in the A375-Fluc-Puro cells facilitates *in vivo* noninvasive imaging of implanted cells.

References

- ¹Miyoshi et al. J Virol. 1998. 72:8150-8157.
- ²Hughes et al. BioTechniques 2007. 43: 575-586.
- ³Chatterjee et al. Science 2007. 315:928-931.
- ⁴<https://grants.nih.gov/grants/guide/notice-files/NOT-OD-08-017.html>
- ⁵<http://www.aacrjournals.org/site/InstrAuthors/ifora.xhtml#celllineuse>
- ⁶Gershwin et al. J Natl Cancer Inst. 1977. 58:1455-1461.

Storage Instructions

Remove cells from the dry ice packaging and immediately store in the vapor phase above liquid nitrogen (below -130°C).

Complete Growth Medium

Dulbecco's Modified Eagle's Medium (DMEM)
10% fetal bovine serum (FBS)
1% Penicillin/Streptomycin
1 µg/mL puromycin (to maintain high Fluc expression)

Thawing Instructions

1. Thaw cells by gently swirling in a 37°C water bath. To limit contamination, do not submerge the O-ring and cap.
2. When cells are ~70% thawed (less than 1 min), remove the vial and wipe down with 70% ethanol. Allow tube to dry completely.
3. In a biosafety cabinet, transfer the cells into a 15 mL conical tube containing 5 mL of pre-warmed complete growth medium without puromycin. Centrifuge cells at ~250 x g for 3-5 min.
4. Remove supernatant and resuspend cells in 1 mL complete growth medium without puromycin. Transfer cells to a T75 flask containing 10 mL pre-warmed complete growth medium without puromycin.
5. Incubate the culture at 37°C with 5% CO₂. After 48 hours, replace the culture supernatant with complete growth medium containing 1 µg/mL puromycin. Cells should reach full confluency 3-4 days after thawing.

Subculturing Instructions

Volumes are given for a T75 flask; increase or decrease as needed. To maintain high Fluc expression, it is recommended that cells be subcultured in the presence of 1 µg/mL puromycin. A375-Fluc-Puro cells should be passaged when they reach 90-100% confluency.

1. Remove culture medium from cells.
2. Carefully wash the cell monolayer with 5-10 mL of phosphate buffered saline.
3. Add 2 mL of 0.25% Trypsin-EDTA solution to the flask and incubate at 37°C until cells have dissociated (approx. 2-5 min).
4. Neutralize the trypsin by adding 8 mL complete growth medium, and mix by gently pipetting up and down.
5. Transfer desired portion of the cells to a fresh T75 flask. Add fresh complete growth medium to a total volume of 10 mL and return cells to 37°C/5% CO₂ incubator.

For maintenance a subcultivation ratio of 1:10 is recommended. At this ratio cells will be ready for passage every 3-4 days.

Freezing Medium

A375-Fluc-Puro cells can be amplified and used to generate additional frozen stocks. Frozen stocks should be preserved in a designated cryopreservation medium or in complete growth medium without puromycin supplemented with 5-10% DMSO.

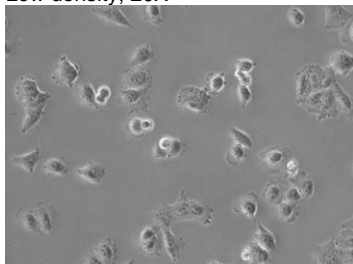
Certificate of Analysis

Testing performed by Imanis Life Sciences

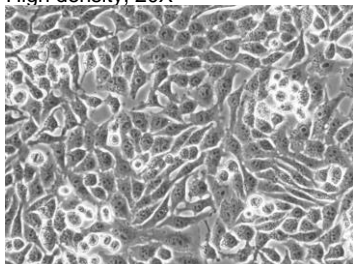
Test description	Result
Post thaw viable cell recovery	Pass QC
Sterility	No contamination detected
Mycoplasma	No contamination detected
Puromycin selection	Pass QC
Luciferase expression	Pass QC

Morphology:

Low density, 20X

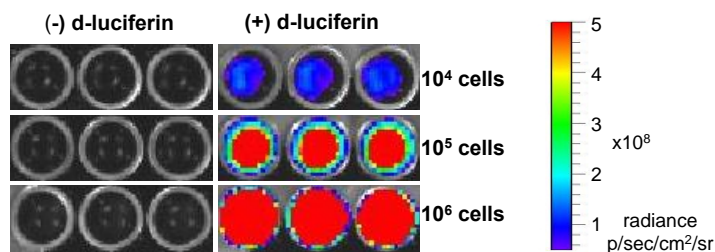


High density, 20X



Low and high density photos taken 25 and 70 hours after thawing, respectively.

Luciferase Expression



10^4 , 10^5 , or 10^6 cells were placed in wells of a 96-well plate and 0.3 mg of d-luciferin was added to the indicated wells. The plate was immediately imaged using a Xenogen IVIS Spectrum.

Legal Disclaimers

Limited Product Warranty

This warranty limits our liability to replacement of this product. No other warranties of any kind, express or implied, including, without limitation, implied warranties of merchantability or fitness for a particular purpose, are provided by Imanis. Imanis shall have no liability for any direct, indirect, consequential, or incidental damages arising out of the use, the results of use, or the inability to use this product.

For *in vitro* use only. This certificate is a declaration of analysis at the time of manufacture.

PURCHASER NOTIFICATION

LIMITED LICENSE NOTICE – RESEARCH USE ONLY

IMANIS LIFE SCIENCES HAS A LIMITED LICENSE UNDER PATENTS OWNED BY THE SALK INSTITUTE FOR BIOLOGICAL STUDIES THAT PERMITS IMANIS LIFE SCIENCES TO SELL PRODUCTS CONTAINING WPRE FOR RESEARCH USE ONLY AND NOT FOR ANY COMMERCIAL USES. EXCLUDED COMMERCIAL USES INCLUDE WITHOUT LIMITATION MANUFACTURING, PROVIDING A SERVICE, THERAPEUTIC, DIAGNOSTIC AND PROPHYLACTIC USES, AND ANY OTHER COMMERCIAL USES. USE OF THIS PRODUCT BY A PURCHASER FOR ANY PURPOSE OTHER THAN FOR RESEARCH IS UNAUTHORIZED AND PROHIBITED.

The Salk Institute actively licenses its patents for commercial uses, and a commercial use license may be available for Salk's WPRE patents. If you wish to inquire about such a license, please contact:

Office of Technology Development
 The Salk Institute for Biological Studies
 10010 North Torrey Pines Road
 La Jolla, CA 92037
 Phone: (858) 453-4100 extension 1278
 Fax: (858) 546-8093

Quality control by: RLV
 Quality Assurance by: SPR
 Effective Date: 12/10/15