

## Product Description

Product Name: CT26.WT-mNIS-Puro  
Catalog Number: CL061  
Lot Number: CL-IM48

Shipping conditions: Dry ice

Storage conditions: Store in vapor phase above liquid nitrogen

Species: Mouse (*Mus musculus*)  
Cell type: Colorectal carcinoma  
Morphology: Epithelial  
Growth mode: Adherent  
Reporter gene: Murine sodium iodide symporter (mNIS)  
Selection gene: Puromycin (Puro)  
Media: DMEM, 10% FBS, 1% Penicillin/Streptomycin, 3 µg/mL puromycin  
Subculture: split confluent culture 1:10 every 3-4 days using 0.25% trypsin/EDTA  
Incubation: 37°C with 5% CO<sub>2</sub>

**Description:** CT26.WT-mNIS-Puro is a polyclonal population of the murine colorectal cancer CT26.WT cell line transduced with a lentiviral vector (Imanis #LV022) encoding the murine sodium iodide symporter (mNIS) cDNA under the spleen focus-forming virus (SFFV) promoter and the puromycin resistance gene (Puro) under the phosphoglycerate kinase (PGK) promoter. High expressing mNIS cells were selected using puromycin. The lentiviral vectors are self-inactivating (SIN) vectors in which the viral enhancer and promoter have been deleted. Transcription inactivation of the LTR in the SIN provirus increases biosafety by preventing mobilization by replication competent viruses and enables regulated expression of the genes from the internal promoters without *cis*-acting effects of the LTR (Miyoshi et al., J Virol. 1998).

**Cell line Authentication:** Authentication of the parental CT26.WT cell line was performed by Short tandem repeat (STR) profiling with 27 STR loci. STR profiling of CT26.WT cells are verified and there is no interspecies cross contamination detected.

It has been estimated that ~18-36% of cell lines utilized in biomedical research are contaminated or completely misidentified (Hughes et al., BioTechniques 2007). Consequently, verification of cell line identity is of critical significance. Several funding organizations, including NIH, and major publishers, such as those affiliated with the American Association for Cancer Research (AACR), have established requirements for cell line authentication prior to publication. More information can be found in the links below.

<https://grants.nih.gov/grants/guide/notice-files/NOT-OD-08-017.html>  
<http://www.aacrjournals.org/site/InstrAuthors/fora.xhtml#celllineuse>

## Certificate of Analysis

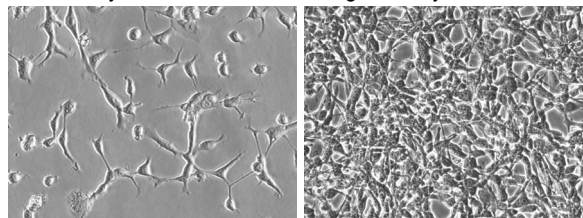
Testing performed by Imanis Life Sciences:

Test description	Result
Post thaw viable cell recovery	Pass QC
Sterility	No contamination detected
Mycoplasma	No contamination detected
Puromycin selection	Pass QC
<sup>125</sup> I Uptake	Pass QC

### Morphology:

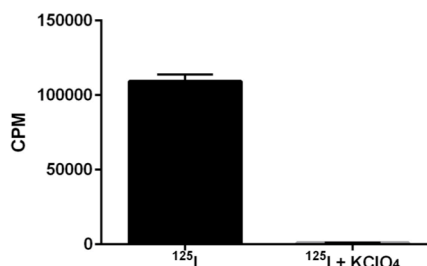
Low density, 20X

High density, 20X



Low and high density photos taken 26 and 72 hours after thawing, respectively.

### <sup>125</sup>I Uptake:



Uptake of <sup>125</sup>I by 3 x 10<sup>5</sup> cells was assayed in the presence or absence of KClO<sub>4</sub>, an inhibitor of NIS-mediated <sup>125</sup>I uptake.

**Quality Control by:** RLV

**Quality Assurance by:** SPR

**Effective Date:** 10/30/15

**Limited Product Warranty**

This warranty limits our liability to replacement of this product. No other warranties of any kind, express or implied, including, without limitation, implied warranties of merchantability or fitness for a particular purpose, are provided by Imanis. Imanis shall have no liability for any direct, indirect, consequential, or incidental damages arising out of the use, the results of use, or the inability to use this product.

For *in vitro* use only. This certificate is a declaration of analysis at the time of manufacture.

**PURCHASER NOTIFICATION****LIMITED LICENSE NOTICE – RESEARCH USE ONLY**

**IMANIS LIFE SCIENCES HAS A LIMITED LICENSE UNDER PATENTS OWNED BY THE SALK INSTITUTE FOR BIOLOGICAL STUDIES THAT PERMITS IMANIS LIFE SCIENCES TO SELL PRODUCTS CONTAINING WPRE FOR RESEARCH USE ONLY AND NOT FOR ANY COMMERCIAL USES. EXCLUDED COMMERCIAL USES INCLUDE WITHOUT LIMITATION MANUFACTURING, PROVIDING A SERVICE, THERAPEUTIC, DIAGNOSTIC AND PROPHYLACTIC USES, AND ANY OTHER COMMERCIAL USES. USE OF THIS PRODUCT BY A PURCHASER FOR ANY PURPOSE OTHER THAN FOR RESEARCH IS UNAUTHORIZED AND PROHIBITED.**

The Salk Institute actively licenses its patents for commercial uses, and a commercial use license may be available for Salk's WPRE patents. If you wish to inquire about such a license, please contact:

Office of Technology Development  
The Salk Institute for Biological Studies  
10010 North Torrey Pines Road  
La Jolla, CA 92037  
Phone: (858) 453-4100 extension 1278  
Fax: (858) 546-8093

**THE NIS GENE AND TECHNOLOGY IS COVERED UNDER AN EXCLUSIVE LICENSE TO IMANIS LIFE SCIENCES. RESEARCHERS MAY USE THIS PRODUCT FOR RESEARCH USE ONLY AND NO COMMERCIAL USE IS ALLOWED. NO OTHER USE OR TRANSFER OF THIS PRODUCT OR DERIVATIVES IS AUTHORIZED WITHOUT THE PRIOR EXPRESS WRITTEN CONSENT OF IMANIS. WITH RESPECT TO ANY USES OUTSIDE THIS LABEL LICENSE, INCLUDING ANY DIAGNOSTIC, THERAPEUTIC OR PROPHYLACTIC USES, PLEASE CONTACT IMANIS LIFE SCIENCES FOR SUPPLY AND LICENSING INFORMATION.**

Chief Operations Officer  
Imanis Life Sciences  
221 1st Ave SW STE 102  
Rochester MN 55902  
Tel: [\(507\) 218-2559](tel:5072182559)  
Email: [info@imanislife.com](mailto:info@imanislife.com)