

Product Description

Product Name: Hepa1-6-Fluc-Neo
Catalog Number: CL130
Lot Number: IMP011

Species: Mouse (*Mus musculus*)
Strain: C57L
Cell type: Hepatoma
Parental cells: Hepa1-6 (ATCC® CRL-1830™)*
Morphology: Epithelial
Growth mode: Adherent
Reporter gene: Firefly luciferase (Fluc)
Selection gene: Neomycin (Neo)

This is a polyclonal population derived from the hepatic carcinoma Hepa1-6 cell line (ATCC® CRL-1830™). Parental Hepa1-6 cells were transduced with LV-Fluc-P2A-Neo (Imanis #LV011) encoding the firefly luciferase (Fluc) cDNA under the spleen focus-forming virus (SFFV) promoter and linked to the neomycin resistance gene (Neo) via a P2A cleavage peptide. High Fluc expressing cells were selected using G418. The lentiviral vector is a self-inactivating (SIN) vector in which the viral enhancer and promoter have been deleted. Transcription inactivation of the LTR in the SIN provirus increases biosafety by preventing mobilization by replication competent viruses and enables regulated expression of the genes from the internal promoters without *cis*-acting effects of the LTR¹.

* The ATCC trademark and any and all ATCC catalog numbers are trademarks of the American Type Culture Collection

Mycoplasma Testing

This cell line has been tested for mycoplasma contamination and is certified mycoplasma free.

Cell Line Authentication

The parental Hepa1-6 cell line was authenticated and certified free of interspecies cross contamination by STR profiling with 27 STR loci.

Recommended Uses

These cells are suitable for *in vitro* and *in vivo* experimentation.

References

¹Miyoshi et al. J Virol. 1998. 72:8150-8157.

Storage Instructions

Remove cells from the dry ice packaging and immediately store in the vapor phase above liquid nitrogen (below -130°C).

Complete Growth Medium

Dulbecco's Modified Eagle's Medium (DMEM)
10% fetal bovine serum (FBS)
1% Penicillin/Streptomycin
1.25 mg/mL G418 (to maintain high Fluc expression)

G418 should NOT be added to the medium until a culture has been well established from the thawed cells (about 1 week). It is also recommended that a backup frozen cell stock be generated (see below) before adding G418 to the growth medium.

Thawing Instructions

1. Thaw cells by gently swirling in a 37°C water bath. To limit contamination, do not submerge the O-ring and cap.
2. When cells are ~70% thawed (less than 1 min), remove the vial and wipe down with 70% ethanol. Allow tube to dry completely.
3. In a biosafety cabinet, transfer the cells into a 15 mL conical tube containing 5 mL of complete growth medium without G418. Centrifuge cells at ~250 x g for 3-5 min.
4. Remove supernatant and resuspend cells in 1 mL complete growth medium without G418. Transfer cells to a T75 flask containing 10 mL complete growth medium without G418.
5. Incubate the culture at 37°C with 5% CO₂. After 48 hours, replace the culture supernatant with complete growth medium containing 1.25 mg/mL G418. Cells should reach full confluency 2-3 days after thawing.

Subculturing Instructions

Volumes are given for a T75 flask; increase or decrease as needed. To maintain high Fluc expression, it is recommended that cells be subcultured in the presence of 1.25 mg/mL G418.

1. Remove culture medium from cells.
2. Carefully wash the cell monolayer with 5-10 mL of phosphate buffered saline.
3. Add 2 mL of 0.25% Trypsin-EDTA solution to the flask and incubate at 37°C until cells have dissociated (approx. 3-4 min).
4. Neutralize the trypsin by adding 8 mL complete growth medium, and mix by gently pipetting up and down.
5. Transfer desired portion of the cells to a fresh T75 flask. Add fresh complete growth medium to a total volume of 10 mL and return cells to 37°C/5% CO₂ incubator.

For maintenance a subcultivation ratio of 1:10 is recommended. At this ratio cells will be ready for passage every 3-4 days.

Freezing Medium

These cells can be amplified and used to generate additional frozen stocks. Cryopreservation of low passage stocks is recommended. Frozen stocks should be preserved in a designated cryopreservation medium or in complete growth medium without G418 supplemented with 5-10% DMSO.

Certificate of Analysis

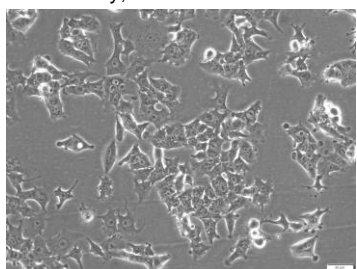
Testing performed by Imanis Life Sciences

Test description	Result
Post thaw viable cell recovery	99%
Cells per vial	$\sim 7 \times 10^6$
Sterility	No contamination detected
Mycoplasma	No contamination detected
Neomycin selection	Pass QC
Luciferase expression	Pass QC
Average doubling time	18 hours*

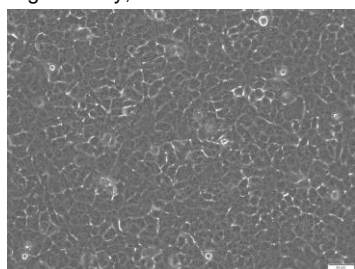
*Doubling time represents the average doubling time during logarithmic growth. This value should be used for general estimation only.

Morphology

Low density, 200X

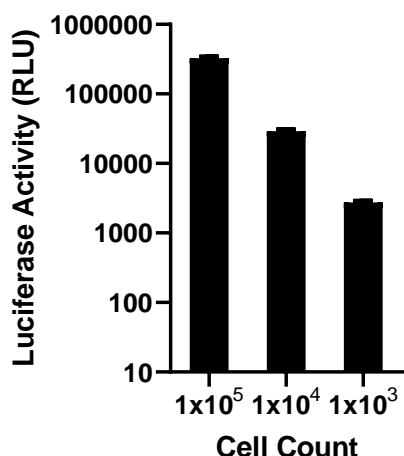


High density, 200X



Low and high density photos taken at various times after thawing.

Luciferase Expression



The indicated number of cells were placed in wells of a 96-well plate. After the addition of 15 mg/mL d-luciferin, bioluminescence was immediately read using a microplate reader.

Legal Disclaimers

LIMITED PRODUCT WARRANTY

THIS WARRANTY LIMITS OUR LIABILITY TO REPLACEMENT OF THIS PRODUCT. NO OTHER WARRANTIES OF ANY KIND, EXPRESS OR IMPLIED, INCLUDING, WITHOUT LIMITATION, IMPLIED WARRANTIES OF MERCHANTABILITY OR FITNESS FOR A PARTICULAR PURPOSE, ARE PROVIDED BY IMANIS. IMANIS SHALL HAVE NO LIABILITY FOR ANY DIRECT, INDIRECT, CONSEQUENTIAL, OR INCIDENTAL DAMAGES ARISING OUT OF THE USE, THE RESULTS OF USE, OR THE INABILITY TO USE THIS PRODUCT.

FOR *IN VITRO* USE ONLY. THIS CERTIFICATE IS A DECLARATION OF ANALYSIS AT THE TIME OF MANUFACTURE.

PURCHASER NOTIFICATION

LIMITED LICENSE NOTICE – RESEARCH USE ONLY

THE IMANIS CELL LINES ARE NOT INTENDED FOR USE IN HUMANS. CELL LINES TRANSDUCED WITH LENTIVIRAL VECTORS ARE CLASSIFIED AS BIOSAFETY LEVEL 2 REAGENTS AND SHOULD BE USED UNDER THE APPROPRIATE BIOSAFETY LEVEL PER INSTITUTIONAL GUIDELINES.

THE PURCHASER AGREES THAT IMANIS MATERIALS DESIGNATED AS BIO-SAFETY LEVEL 2 CONSTITUTE KNOWN PATHOGENS AND THAT OTHER IMANIS MATERIALS NOT SO DESIGNATED AND ANY PROGENY OR MODIFICATION MAY BE PATHOGENIC UNDER CERTAIN CONDITIONS. PURCHASER ASSUMES ALL RISK AND RESPONSIBILITY IN CONNECTION WITH THE RECEIPT, HANDLING, STORAGE, DISPOSAL, TRANSFER AND USE OF THE IMANIS MATERIALS INCLUDING WITHOUT LIMITATION TAKING ALL APPROPRIATE SAFETY AND HANDLING PRECAUTIONS TO MINIMIZE HEALTH OR ENVIRONMENTAL RISK. PURCHASER AGREES THAT ANY ACTIVITY UNDERTAKEN WITH THE IMANIS MATERIALS AND ANY PROGENY OR MODIFICATION WILL BE CONDUCTED IN COMPLIANCE WITH ALL APPLICABLE GUIDELINES, LAWS AND REGULATIONS.

THE IMANIS MATERIAL, ANY OTHER IMANIS PRODUCTS, AND ANY TECHNICAL INFORMATION AND ASSISTANCE PROVIDED BY IMANIS ARE PROVIDED "AS IS", WITHOUT WARRANTIES OF ANY KIND, EXPRESS OR IMPLIED, INCLUDING BUT NOT LIMITED TO ANY IMPLIED WARRANTIES OF MERCHANTABILITY, FITNESS FOR A PARTICULAR PURPOSE, MANUFACTURE ACCORDING TO cGMP STANDARDS, TYPICALITY, SAFETY, ACCURACY AND NON-INFRINGEMENT.

IN NO EVENT SHALL IMANIS, ITS PARENTS, SUBSIDIARIES, DIRECTORS, OFFICERS, AGENTS, EMPLOYEES, ASSIGNS, SUCCESSORS AND AFFILIATE (COLLECTIVELY "IMANIS INDEMNIFIED PARTIES") BE LIABLE FOR INDIRECT, SPECIAL, INCIDENTAL OR CONSEQUENTIAL DAMAGES OF ANY KIND IN CONNECTION WITH OR ARISING OUT OF THIS AGREEMENT (WHETHER IN CONTRACT, TORT, NEGLIGENCE, STRICT LIABILITY, STATUTE OR OTHERWISE) EVEN IF IMANIS HAS BEEN ADVISED, KNEW OR SHOULD HAVE KNOWN OF THE POSSIBILITY OF SUCH DAMAGES, INCLUDING, BUT NOT LIMITED TO, LOST PROFITS, COST OF CAPITAL, COST OF SUBSTITUTE PRODUCTS OR CLAIMS OF LICENSEE'S CUSTOMERS FOR SUCH DAMAGE. IN NO EVENT SHALL IMANIS' CUMULATIVE LIABILITY EXCEED THE ACTUAL AMOUNTS PAID BY PURCHASER UNDER THIS AGREEMENT FOR THE TWELVE (12) MONTH PERIOD PRECEDING THE DATE OF THE EVENT GIVING RISE TO THE CLAIM. THE PROVISIONS OF THIS SECTION SHALL SURVIVE THE EXPIRATION OR TERMINATION OF THIS AGREEMENT AND SHALL APPLY EVEN IF THE LIMITED REMEDY SPECIFIED IN THIS AGREEMENT IS FOUND TO HAVE FAILED OF ITS ESSENTIAL PURPOSE.

Quality control by: AWD
Quality Assurance by: RLV
Effective Date: 12-Oct-2022