

# 4T1-Fluc-Neo (monoclonal)



## Product Description

Product Name: 4T1-Fluc-Neo (monoclonal)  
Catalog Number: CL126  
Lot Number: CL-IM122

Species: Mouse (*Mus musculus*)  
Strain: BALB/cfC3H  
Cell type: Mammary carcinoma  
Parental cells: 4T1 (ATCC® CRL-2539™)\*  
Morphology: Epithelial  
Growth mode: Adherent  
Reporter gene: Firefly luciferase (Fluc)  
Selection gene: Neomycin (Neo)

This is a monoclonal population derived from the mammary carcinoma 4T1 cell line (ATCC® CRL-2539™). Parental 4T1 cells were transduced with LV-Luc2-P2A-Neo (Imanis #LV011) encoding the firefly luciferase (Fluc) cDNA under the spleen focus-forming virus (SFFV) promoter and linked to the neomycin resistance gene (Neo) cDNA via a P2A cleavage peptide. A monoclonal population was isolated following selection with G418 and two rounds of selection in a methylcellulose-based semi-solid medium. The lentiviral vector is a self-inactivating (SIN) vector in which the viral enhancer and promoter have been deleted. Transcription inactivation of the LTR in the SIN provirus increases biosafety by preventing mobilization by replication competent viruses and enables regulated expression of the genes from the internal promoters without *cis*-acting effects of the LTR<sup>1</sup>.

\* The ATCC trademark and any and all ATCC catalog numbers are trademarks of the American Type Culture Collection

## Mycoplasma Testing

This cell line has been tested for mycoplasma contamination and is certified mycoplasma free.

## Cell Line Authentication

Studies suggest 18-36% of cell lines utilized in biomedical research are contaminated or completely misidentified,<sup>2,3</sup> and several funding organizations and major publishers require cell lines used in research to be authenticated prior to publication<sup>4,5</sup>. The parental 4T1 cell line was authenticated and certified free of interspecies cross contamination by STR profiling with 27 STR loci.

## Recommended Uses

These cells are suitable for *in vitro* and *in vivo* experimentation.

4T1 cells form primary tumors that can metastasize to the lung, liver, lymph nodes, and brain post implantation into syngenic BALB/c mice<sup>6</sup>.

The Fluc transgene in the 4T1-Fluc-Neo cells facilitates *in vivo* noninvasive bioluminescent imaging of implanted cells. Fluc is immunogenic and may cause tumor rejection in immunocompetent mice. For the most consistent results, immunocompromised mice are recommended for studies.

## Storage Instructions

Remove cells from the dry ice packaging and immediately store in the vapor phase above liquid nitrogen (below -130°C).

## Complete Growth Medium

RPMI-1640 Medium (RPMI)  
10% fetal bovine serum (FBS)  
1% Penicillin/Streptomycin

## Thawing Instructions

1. Thaw cells by gently swirling in a 37°C water bath. To limit contamination, do not submerge the O-ring and cap.
2. When cells are ~70% thawed (less than 1 min), remove the vial and wipe down with 70% ethanol. Allow tube to dry completely.
3. In a biosafety cabinet, transfer the cells into a 15 mL conical tube containing 5 mL of complete growth medium. Centrifuge cells at ~250 x *g* for 3-5 min.
4. Remove supernatant and resuspend cells in 1 mL complete growth medium. Transfer cells to a T75 flask containing 10 mL complete growth medium.
5. Incubate the culture at 37°C with 5% CO<sub>2</sub>. After 48 hours, replace the culture supernatant with complete growth medium and passage cells if needed. Cells should reach full confluency 3-4 days after thawing.

## Subculturing Instructions

Volumes are given for a T75 flask; increase or decrease as needed. To maintain high Fluc expression, cells can be subcultured in the presence of 0.1 mg/mL G418.

1. Remove culture medium from cells.
2. Carefully wash the cell monolayer with 5-10 mL of phosphate buffered saline.
3. Add 2 mL of 0.25% Trypsin-EDTA solution to the flask and incubate at 37°C until cells have dissociated (approx. 2-5 min).
4. Neutralize the trypsin by adding 8 mL complete growth medium, and mix by gently pipetting up and down.
5. Transfer desired portion of the cells to a fresh T75 flask. Add fresh complete growth medium to a total volume of 10 mL and return cells to 37°C/5% CO<sub>2</sub> incubator.

For maintenance, a subcultivation ratio of 1:10 is recommended. At this ratio cells will be ready for passage every 3-4 days. 4T1 cells frequently clump and should be passaged when they reach 80-90% confluency overall. Cell clumping is especially common after initial thawing and cells may need to be passaged more frequently at a lower subcultivation ratio for 2-3 passages after thawing.

## Freezing Medium

These cells can be amplified and used to generate additional frozen stocks. Cryopreservation of low passage stocks is recommended. Frozen stocks should be preserved in a designated cryopreservation medium or in complete growth medium supplemented with 5-10% DMSO.

## References

- <sup>1</sup>Miyoshi et al. J Virol. 1998. 72:8150-8157.
- <sup>2</sup>Hughes et al. BioTechniques 2007. 43: 575-586.
- <sup>3</sup>Chatterjee et al. Science 2007. 315:928-931.
- <sup>4</sup><https://grants.nih.gov/grants/guide/notice-files/NOT-OD-08-017.html>
- <sup>5</sup><http://www.aacrjournals.org/site/InstrAuthors/ifora.xhtml#celllineuse>
- <sup>6</sup>Pulaski and Ostrand-Rosenberg. Cancer Res. 1998. 58:1486-1493.

# 4T1-Fluc-Neo (monoclonal)



## Certificate of Analysis

Testing performed by Imanis Life Sciences

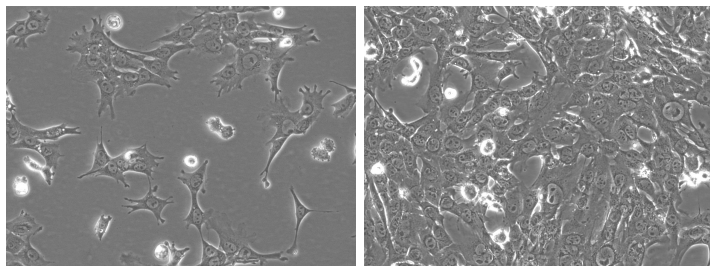
Test description	Result
Post thaw viable cell recovery	Pass QC
Sterility	No contamination detected
Mycoplasma	No contamination detected
Neomycin selection	Pass QC
Luciferase expression	Pass QC
Average doubling time	11.9 hours*

\*Doubling time represents the average doubling time during logarithmic growth. This value should be used for general estimation only.

## Morphology:

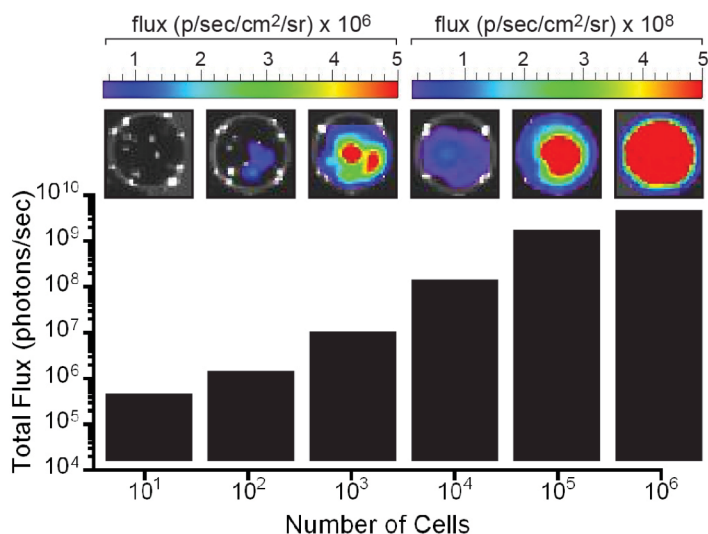
Low density, 200X

High density, 200X



Low and high density photos taken at various times after thawing.

## Luciferase Expression:



The indicated number of cells were placed in wells of a 96-well plate. After the addition of 3 mg/mL d-luciferin, the plate was immediately imaged using an IVIS Spectrum. The total flux (photons/sec) was plotted as a function of cell number.

## Legal Disclaimers

### Legal Disclaimers

#### LIMITED PRODUCT WARRANTY

THIS WARRANTY LIMITS OUR LIABILITY TO REPLACEMENT OF THIS PRODUCT. NO OTHER WARRANTIES OF ANY KIND, EXPRESS OR IMPLIED, INCLUDING, WITHOUT LIMITATION, IMPLIED WARRANTIES OF MERCHANTABILITY OR FITNESS FOR A PARTICULAR PURPOSE, ARE PROVIDED BY IMANIS. IMANIS SHALL HAVE NO LIABILITY FOR ANY DIRECT, INDIRECT, CONSEQUENTIAL, OR INCIDENTAL DAMAGES ARISING OUT OF THE USE, THE RESULTS OF USE, OR THE INABILITY TO USE THIS PRODUCT.

FOR *IN VITRO* USE ONLY. THIS CERTIFICATE IS A DECLARATION OF ANALYSIS AT THE TIME OF MANUFACTURE.

#### PURCHASER NOTIFICATION

#### LIMITED LICENSE NOTICE - RESEARCH USE ONLY

IMANIS LIFE SCIENCES HAS A LIMITED LICENSE UNDER PATENTS OWNED BY THE SALK INSTITUTE FOR BIOLOGICAL STUDIES THAT PERMITS IMANIS LIFE SCIENCES TO SELL PRODUCTS CONTAINING WPRE FOR RESEARCH USE ONLY AND NOT FOR ANY COMMERCIAL USES. EXCLUDED COMMERCIAL USES INCLUDE WITHOUT LIMITATION MANUFACTURING, PROVIDING A SERVICE, THERAPEUTIC, DIAGNOSTIC AND PROPHYLACTIC USES, AND ANY OTHER COMMERCIAL USES. USE OF THIS PRODUCT BY A PURCHASER FOR ANY PURPOSE OTHER THAN FOR RESEARCH IS UNAUTHORIZED AND PROHIBITED.

THE SALK INSTITUTE ACTIVELY LICENSES ITS PATENTS FOR COMMERCIAL USES, AND A COMMERCIAL USE LICENSE MAY BE AVAILABLE FOR SALK'S WPRE PATENTS. IF YOU WISH TO INQUIRE ABOUT SUCH A LICENSE, PLEASE CONTACT:

Office of Technology Development  
The Salk Institute for Biological Studies  
10301 North Torrey Pines Road  
La Jolla, CA 92037  
Phone: (858) 453-4100 extension 1278  
Fax: (858) 546-8093

THE IMANIS CELL LINES ARE NOT INTENDED FOR USE IN HUMANS. CELL LINES TRANSDUCED WITH LENTIVIRAL VECTORS ARE CLASSIFIED AS BIOSAFETY LEVEL 2 REAGENTS AND SHOULD BE USED UNDER THE APPROPRIATE BIOSAFETY LEVEL PER INSTITUTIONAL GUIDELINES.

THE PURCHASER AGREES THAT IMANIS MATERIALS DESIGNATED AS BIO-SAFETY LEVEL 2 CONSTITUTE KNOWN PATHOGENS AND THAT OTHER IMANIS MATERIALS NOT SO DESIGNATED AND ANY PROGENY OR MODIFICATION MAY BE PATHOGENIC UNDER CERTAIN CONDITIONS. PURCHASER ASSUMES ALL RISK AND RESPONSIBILITY IN CONNECTION WITH THE RECEIPT, HANDLING, STORAGE, DISPOSAL, TRANSFER AND USE OF THE IMANIS MATERIALS INCLUDING WITHOUT LIMITATION TAKING ALL APPROPRIATE SAFETY AND HANDLING PRECAUTIONS TO MINIMIZE HEALTH OR ENVIRONMENTAL RISK. PURCHASER AGREES THAT ANY ACTIVITY UNDERTAKEN WITH THE IMANIS MATERIALS AND ANY PROGENY OR MODIFICATION WILL BE CONDUCTED IN COMPLIANCE WITH ALL APPLICABLE GUIDELINES, LAWS AND REGULATIONS.

THE IMANIS MATERIAL, ANY OTHER IMANIS PRODUCTS, AND ANY TECHNICAL INFORMATION AND ASSISTANCE PROVIDED BY IMANIS ARE PROVIDED "AS IS", WITHOUT WARRANTIES OF ANY KIND, EXPRESS OR IMPLIED, INCLUDING BUT NOT LIMITED TO ANY IMPLIED WARRANTIES OF MERCHANTABILITY, FITNESS FOR A PARTICULAR PURPOSE, MANUFACTURE ACCORDING TO cGMP STANDARDS, TYPICALITY, SAFETY, ACCURACY AND NON-INFRINGEMENT.

IN NO EVENT SHALL IMANIS, ITS PARENTS, SUBSIDIARIES, DIRECTORS, OFFICERS, AGENTS, EMPLOYEES, ASSIGNS, SUCCESSORS AND AFFILIATE (COLLECTIVELY "IMANIS INDEMNIFIED PARTIES") BE LIABLE FOR INDIRECT, SPECIAL, INCIDENTAL OR CONSEQUENTIAL DAMAGES OF ANY KIND IN CONNECTION WITH OR ARISING OUT OF THIS AGREEMENT (WHETHER IN CONTRACT, TORT, NEGLIGENCE, STRICT LIABILITY, STATUTE OR OTHERWISE) EVEN IF IMANIS HAS BEEN ADVISED, KNEW OR SHOULD HAVE KNOWN OF THE POSSIBILITY OF SUCH DAMAGES, INCLUDING, BUT NOT LIMITED TO, LOST PROFITS, COST OF CAPITAL, COST OF SUBSTITUTE PRODUCTS OR CLAIMS OF LICENSEE'S CUSTOMERS FOR SUCH DAMAGE. IN NO EVENT SHALL IMANIS' CUMULATIVE LIABILITY EXCEED THE ACTUAL AMOUNTS PAID BY PURCHASER UNDER THIS AGREEMENT FOR THE TWELVE (12) MONTH PERIOD PRECEDING THE DATE OF THE EVENT GIVING RISE TO THE CLAIM. THE PROVISIONS OF THIS SECTION SHALL SURVIVE THE EXPIRATION OR TERMINATION OF THIS AGREEMENT AND SHALL APPLY EVEN IF THE LIMITED REMEDY SPECIFIED IN THIS AGREEMENT IS FOUND TO HAVE FAILED OF ITS ESSENTIAL PURPOSE.

Quality control by: RLV

Quality Assurance by: JKM

Effective Date: 30-Jun-2017

For research use only. Not intended for any animal or human therapeutic or diagnostic use.

©Imanis Life Sciences, LLC. All rights reserved.