

Product Description

Product Name: RPMI-8226-Fluc-Puro
 Catalog Number: CL174
 Lot Number: IMP022
 Species: Human (*Homo sapiens*)
 Tissue: Peripheral blood
 Disease: Plasmacytoma
 Parental cells: RPMI 8226 (ATCC® CCL-155™)*
 Morphology: Lymphoblast
 Growth mode: Suspension
 Reporter gene: Firefly luciferase (Fluc)
 Selection gene: Puromycin (Puro)

This is a cell line derived from the RPMI 8226 cell line (ATCC® CCL-155™). Parental RPMI 8226 cells were transduced with LV-SFFV-Fluc-P2A-Puro (Imanis #LV012) encoding the firefly luciferase (Fluc) cDNA under the spleen focus-forming virus (SFFV) promoter and linked to the puromycin resistance gene (Puro) via a P2A cleavage peptide. A high Fluc-expressing population was generated by selection using puromycin followed by selection with a methylcellulose-based semi-solid medium. The lentiviral vector is a self-inactivating (SIN) vector in which the viral enhancer and promoter have been deleted. Transcription inactivation of the LTR in the SIN provirus increases biosafety by preventing mobilization by replication competent viruses and enables regulated expression of the genes from the internal promoters without *cis*-acting effects of the LTR¹.

* The ATCC trademark and any and all ATCC catalog numbers are trademarks of the American Type Culture Collection

Mycoplasma Testing

This cell line has been tested for mycoplasma contamination and is mycoplasma free.

Recommended Uses

These cells are suitable for *in vitro* and *in vivo* experimentation.

The luciferase transgene facilitates non-invasive *in vivo* bioluminescence imaging.

References

¹Miyoshi et al. J Virol. 1998. 72:8150-8157.

Biosafety Notice

This cell line was generated by transduction with a lentiviral vector. Cell lines transduced with lentiviral vectors are classified as biosafety level 2 reagents and should be used under appropriate biosafety level for institutional guidelines.

Storage Instructions

Remove cells from the dry ice packaging and immediately store in the vapor phase above liquid nitrogen (below -130°C).

Complete Growth Medium

ATCC Formulated RPMI-1640 Medium
 15% Fetal Bovine Serum (FBS)
 1% Penicillin/Streptomycin
 1 µg/mL Puromycin

Puromycin should **NOT** be added to the medium until a culture has been well established from the thawed cells (about 1 week). It is also recommended that a backup frozen cell stock be generated (see below) before adding puromycin to the growth medium.

Caution! Typical commercial puromycin stocks are provided at a concentration of 10 mg/mL or 10,000X.

Thawing Instructions

1. Thaw cells by gently swirling in a 37°C water bath. To limit contamination, do not submerge the O-ring and cap.
2. When cells are ~70% thawed (about 1 min), remove the vial and wipe down with 70% ethanol. Allow tube to dry completely.
3. In a biosafety cabinet, transfer the cells into a 15 mL conical tube containing 5 mL of complete growth medium. Centrifuge cells at ~300 x g for 4-5 min.
4. Remove supernatant and resuspend cells in complete growth medium to a final density of 1 x 10⁶ cells/mL. Transfer the cells to a T25 or T75 suspension culture flask.
5. Incubate the culture at 37°C with 5% CO₂.

Note: Cell viability will decrease 1-2 days after thaw, but will begin to recover within 3-4 days.

Subculturing Instructions

Passage cells by dilution in fresh complete growth medium. If desired, use centrifugation to remove excess debris as follows:

1. Pipet the cell suspension gently to dislodge any cells loosely attached to the culture flask. Transfer the desired volume (half, one-fourth, etc.) of the cells to a conical tube.
2. Centrifuge at ~150 x g for 3 min. (Note: a short, low speed spin is recommended to limit the amount of cell debris in the pellet.)
3. Remove the supernatant and resuspend the cells in complete growth medium. Transfer to an appropriately sized flask.

The cells should be subcultured as needed to maintain a density between 5 x 10⁵ and 2 x 10⁶ cells/mL. A complete media change is recommended approximately every 4 days for optimal cell viability.

Freezing Medium

These cells can be amplified and used to generate additional frozen stocks. Cryopreservation of low passage stocks is recommended. Frozen stocks should be preserved in a designated cryopreservation medium or in complete growth medium without puromycin supplemented with 5-10% DMSO.

Certificate of Analysis

Testing performed by Imanis Life Sciences

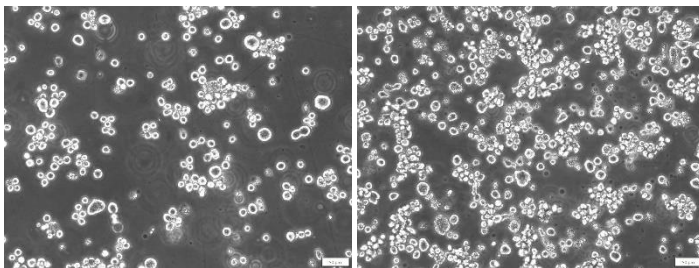
Test Description	Results
Post thaw viable cell recovery	73%
Viable cells per vial	~ 1 x 10 ⁷
Sterility	No contamination detected
Mycoplasma	No contamination detected
Luciferase expression	Pass QC
Average doubling time	34.3 hours*

*Doubling time represents the average doubling time during logarithmic growth. This value should be used for general estimation only.

Morphology

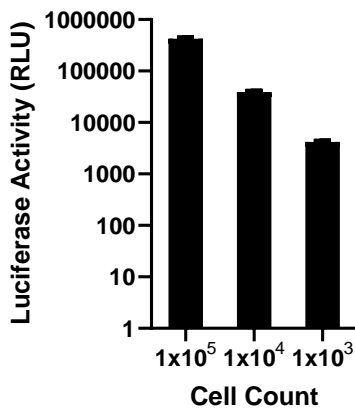
Low density, 200X

High density, 200X



Low- and high- density photos taken at various times after thawing.

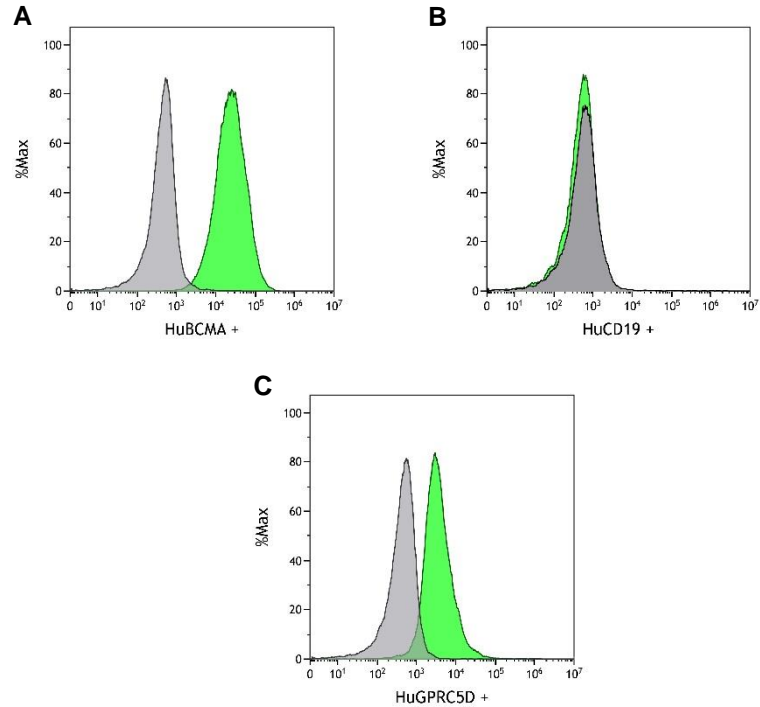
Luciferase Expression



The indicated number of cells were placed in wells of a 96-well plate. After the addition of 15 mg/mL d-luciferin, bioluminescence was immediately read using a microplate reader.

Quality Control by: AWD
Quality Assurance by: RLV
Effective Date: 19-Sep-2023

Expression Profiling of Surface Markers



RPMI-8226-Fluc-Puro cells were stained with anti-HuBCMA antibody (A), anti-HuCD19 antibody (B), or anti-HuGPCR5D antibody (C) and analyzed by flow cytometry; stained cells shown in green and isotype control in grey.

Legal Disclaimers

THE IMANIS CELL LINES ARE NOT INTENDED FOR USE IN HUMANS. CELL LINES TRANSFECTED WITH LENTIVIRAL VECTORS ARE CLASSIFIED AS BIOSAFETY LEVEL 2 REAGENTS AND SHOULD BE USED UNDER THE APPROPRIATE BIOSAFETY LEVEL PER INSTITUTIONAL GUIDELINES.

LIMITED PRODUCT WARRANTY
 THIS WARRANTY LIMITS OUR LIABILITY TO REPLACEMENT OF THIS PRODUCT. NO OTHER WARRANTIES OF ANY KIND, EXPRESS OR IMPLIED, INCLUDING, WITHOUT LIMITATION, IMPLIED WARRANTIES OF MERCHANTABILITY OR FITNESS FOR A PARTICULAR PURPOSE, ARE PROVIDED BY IMANIS. IMANIS SHALL HAVE NO LIABILITY FOR ANY DIRECT, INDIRECT, CONSEQUENTIAL, OR INCIDENTAL DAMAGES ARISING OUT OF THE USE, THE RESULTS OF USE, OR THE INABILITY TO USE THIS PRODUCT.

FOR *IN VITRO* USE ONLY. THIS CERTIFICATE IS A DECLARATION OF ANALYSIS AT THE TIME OF MANUFACTURE.

PURCHASER NOTIFICATION

LIMITED LICENSE NOTICE – RESEARCH USE ONLY

THE PURCHASER AGREES THAT IMANIS MATERIALS DESIGNATED AS BIO-SAFETY LEVEL 2 CONSTITUTE KNOWN PATHOGENS AND THAT OTHER IMANIS MATERIALS NOT SO DESIGNATED AND ANY PROGENY OR MODIFICATION MAY BE PATHOGENIC UNDER CERTAIN CONDITIONS. PURCHASER ASSUMES ALL RISK AND RESPONSIBILITY IN CONNECTION WITH THE RECEIPT, HANDLING, STORAGE, DISPOSAL, TRANSFER AND USE OF THE IMANIS MATERIALS INCLUDING WITHOUT LIMITATION TAKING ALL APPROPRIATE SAFETY AND HANDLING PRECAUTIONS TO MINIMIZE HEALTH OR ENVIRONMENTAL RISK. PURCHASER AGREES THAT ANY ACTIVITY UNDERTAKEN WITH THE IMANIS MATERIALS AND ANY PROGENY OR MODIFICATION WILL BE CONDUCTED IN COMPLIANCE WITH ALL APPLICABLE GUIDELINES, LAWS AND REGULATIONS.

THE IMANIS MATERIAL, ANY OTHER IMANIS PRODUCTS, AND ANY TECHNICAL INFORMATION AND ASSISTANCE PROVIDED BY IMANIS ARE PROVIDED "AS IS", WITHOUT WARRANTIES OF ANY KIND, EXPRESS OR IMPLIED, INCLUDING BUT NOT LIMITED TO ANY IMPLIED WARRANTIES OF MERCHANTABILITY, FITNESS FOR A PARTICULAR PURPOSE, MANUFACTURE ACCORDING TO cGMP STANDARDS, TYPICALITY, SAFETY, ACCURACY AND NON-INFRINGEMENT.

IN NO EVENT SHALL IMANIS, ITS PARENTS, SUBSIDIARIES, DIRECTORS, OFFICERS, AGENTS, EMPLOYEES, ASSIGNS, SUCCESSORS AND AFFILIATE (COLLECTIVELY "IMANIS INDEMNIFIED PARTIES") BE LIABLE FOR INDIRECT, SPECIAL, INCIDENTAL OR CONSEQUENTIAL DAMAGES OF ANY KIND IN CONNECTION WITH OR ARISING OUT OF THIS AGREEMENT (WHETHER IN CONTRACT, TORT, NEGLIGENCE, STRICT LIABILITY, STATUTE OR OTHERWISE) EVEN IF IMANIS HAS BEEN ADVISED, KNEW OR SHOULD HAVE KNOWN OF THE POSSIBILITY OF SUCH DAMAGES, INCLUDING, BUT NOT LIMITED TO, LOST PROFITS, COST OF CAPITAL, COST OF SUBSTITUTE PRODUCTS OR CLAIMS OF LICENSEE'S CUSTOMERS FOR SUCH DAMAGE. IN NO EVENT SHALL IMANIS' CUMULATIVE LIABILITY EXCEED THE ACTUAL AMOUNTS PAID BY PURCHASER UNDER THIS AGREEMENT FOR THE TWELVE (12) MONTH PERIOD PRECEDING THE DATE OF THE EVENT GIVING RISE TO THE CLAIM. THE PROVISIONS OF THIS SECTION SHALL SURVIVE THE EXPIRATION OR TERMINATION OF THIS AGREEMENT AND SHALL APPLY EVEN IF THE LIMITED REMEDY SPECIFIED IN THIS AGREEMENT IS FOUND TO HAVE FAILED OF ITS ESSENTIAL PURPOSE.

For research use only. Not intended for any animal or human therapeutic or diagnostic use.

©Imanis Life Sciences, LLC. All rights reserved.